

A map of MSA 12620 Bangor ME

Income as % of the MSA Median: Upper-Income (10), Middle-Income (21), Moderate-Income (15), Low-Income (0)

Outline - shown in a Black outline, County - shown in a pink outline, Tract 2020 - shown in a Black outline, Town - shown in a yellow outline,

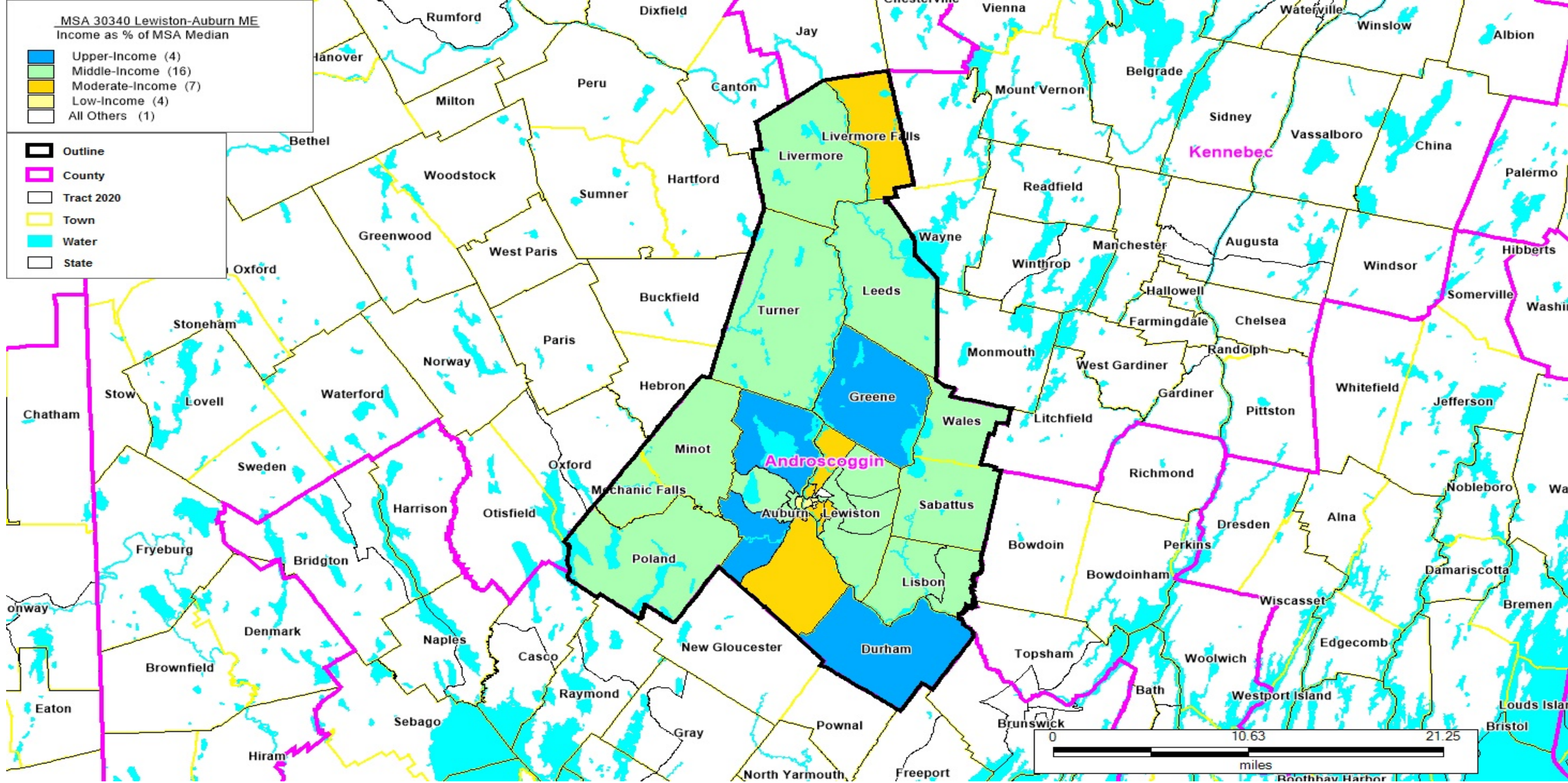
Water - shown in a blue outline, State - shown in a Black outline

MAINE

MSA 12620 Bangor ME

FORMAT: STATECODE/COUNTYCODE/TRACTCODE

23/019/0002.00, 23/019/0003.00, 23/019/0004.00, 23/019/0005.00, 23/019/0006.00, 23/019/0007.00, 23/019/0009.00,
23/019/0020.00, 23/019/0030.00, 23/019/0041.00, 23/019/0042.00, 23/019/0043.00, 23/019/0050.00, 23/019/0061.00,
23/019/0062.00, 23/019/0063.00, 23/019/0071.00, 23/019/0072.00, 23/019/0080.01, 23/019/0090.00, 23/019/0100.00,
23/019/0110.00, 23/019/0120.00, 23/019/0125.00, 23/019/0130.00, 23/019/0135.00, 23/019/0140.00, 23/019/0150.00,
23/019/0155.00, 23/019/0180.00, 23/019/0205.00, 23/019/0215.00, 23/019/0225.00, 23/019/0245.00, 23/019/0255.00,
23/019/0265.00, 23/019/0270.00, 23/019/0280.00, 23/019/0285.00, 23/019/0290.00, 23/019/0300.00, 23/019/0310.00,
23/019/0311.00, 23/019/0312.00, 23/019/0313.00, 23/019/9400.00



A map of MSA 30340 Lewiston Auburn ME

Income as % of the MSA Median: Upper-Income (4), Middle-Income (16), Moderate-Income (7), Low-Income (4), All Others (1)

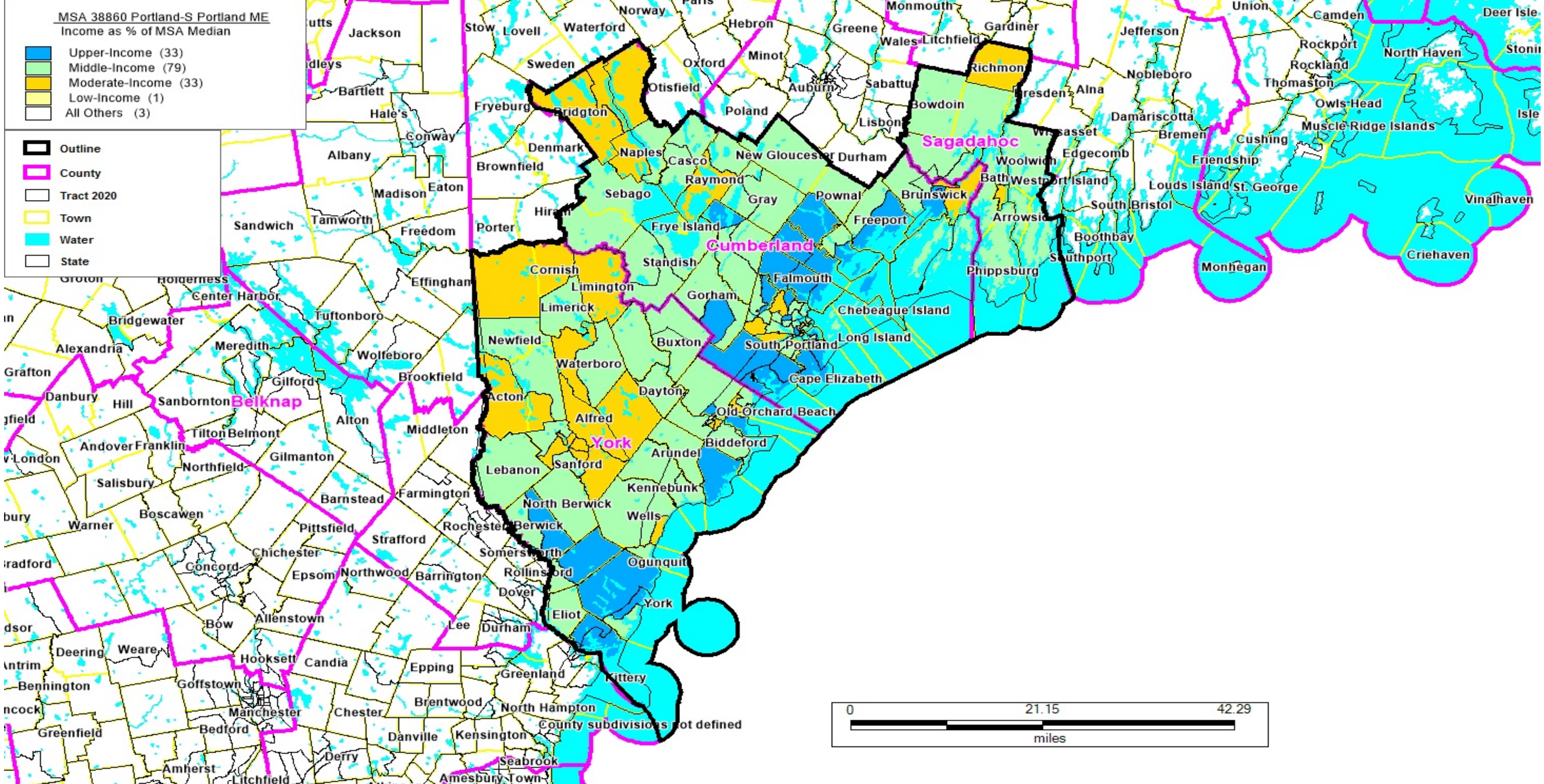
Outline - shown in a Black outline, County - shown in a pink outline, Tract 2020 - shown in a Black outline, Town - shown in a yellow outline, Water - shown in a blue outline, State - shown in a Black outline

MAINE

MSA 30340 Lewiston-Auburn ME

FORMAT: STATECODE/COUNTYCODE/TRACTCODE

23/001/0101.00, 23/001/0102.00, 23/001/0103.00, 23/001/0104.00, 23/001/0105.00, 23/001/0106.00, 23/001/0107.00,
23/001/0108.00, 23/001/0201.00, 23/001/0202.00, 23/001/0203.01, 23/001/0203.02, 23/001/0203.03, 23/001/0204.01,
23/001/0204.02, 23/001/0205.00, 23/001/0206.00, 23/001/0207.00, 23/001/0208.01, 23/001/0208.02, 23/001/0209.00,
23/001/0301.00, 23/001/0302.00, 23/001/0400.00, 23/001/0410.00, 23/001/0415.00, 23/001/0420.00, 23/001/0430.00,
23/001/0440.00, 23/001/0450.00, 23/001/0460.00, 23/001/0465.00



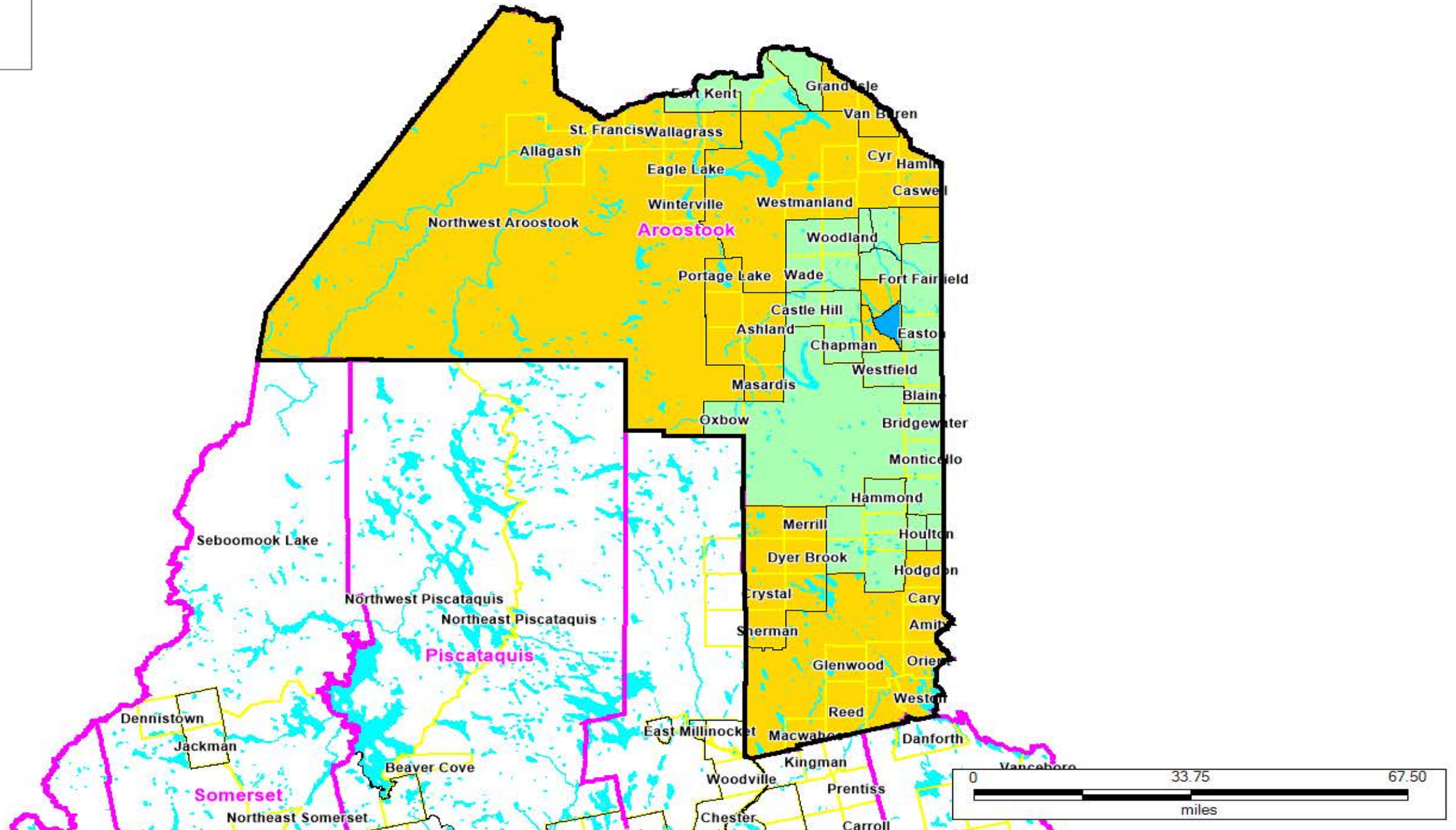
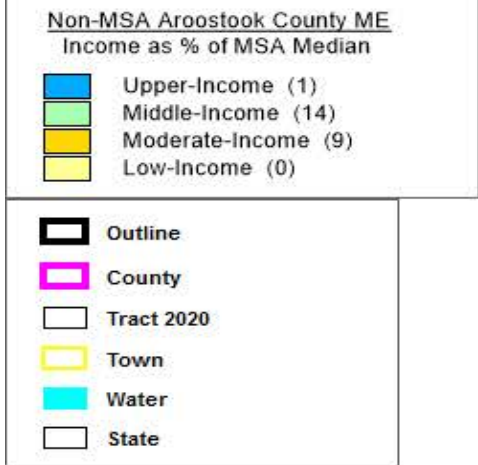
A map of MSA 38860 Portland South Portland ME
 Income as % of the MSA Median: Upper-Income (33), Middle-Income (79), Moderate-Income (33), Low-Income (1), All Others (3)
 Outline - shown in a Black outline, County - shown in a pink outline, Tract 2020 - shown in a Black outline, Town - shown in a yellow outline,
 Water - shown in a blue outline, State - shown in a Black outline

MAINE

MSA 38860 Portland-S Portland ME

FORMAT: STATECODE/COUNTYCODE/TRACTCODE

23/005/0001.00, 23/005/0002.00, 23/005/0003.00, 23/005/0005.00, 23/005/0006.00, 23/005/0010.00, 23/005/0011.00, 23/005/0012.00, 23/005/0013.00, 23/005/0015.00, 23/005/0017.00, 23/005/0018.00, 23/005/0019.00, 23/005/0020.01, 23/005/0020.02, 23/005/0021.01, 23/005/0021.02, 23/005/0022.00, 23/005/0023.00, 23/005/0024.00, 23/005/0025.01, 23/005/0025.03, 23/005/0025.04, 23/005/0026.00, 23/005/0027.00, 23/005/0028.00, 23/005/0029.01, 23/005/0029.02, 23/005/0030.01, 23/005/0030.02, 23/005/0031.00, 23/005/0032.00, 23/005/0033.00, 23/005/0034.00, 23/005/0035.00, 23/005/0037.01, 23/005/0037.02, 23/005/0040.01, 23/005/0040.02, 23/005/0041.00, 23/005/0042.01, 23/005/0042.02, 23/005/0044.01, 23/005/0044.02, 23/005/0045.01, 23/005/0045.02, 23/005/0046.00, 23/005/0047.01, 23/005/0047.02, 23/005/0048.02, 23/005/0048.03, 23/005/0048.04, 23/005/0048.05, 23/005/0111.00, 23/005/0112.03, 23/005/0112.04, 23/005/0112.05, 23/005/0112.06, 23/005/0113.00, 23/005/0115.00, 23/005/0120.01, 23/005/0120.02, 23/005/0130.01, 23/005/0130.02, 23/005/0140.01, 23/005/0140.02, 23/005/0150.00, 23/005/0160.01, 23/005/0160.02, 23/005/0165.00, 23/005/0170.02, 23/005/0170.03, 23/005/0170.04, 23/005/0171.01, 23/005/0171.02, 23/005/0173.03, 23/005/0173.05, 23/005/0173.06, 23/005/0173.07, 23/005/0173.08, 23/005/9900.00, 23/023/9701.00, 23/023/9702.00, 23/023/9703.01, 23/023/9703.02, 23/023/9704.00, 23/023/9705.00, 23/023/9706.00, 23/023/9707.00, 23/023/9900.00, 23/031/0051.00, 23/031/0052.00, 23/031/0053.01, 23/031/0053.02, 23/031/0054.00, 23/031/0061.03, 23/031/0061.04, 23/031/0061.05, 23/031/0061.06, 23/031/0200.01, 23/031/0200.02, 23/031/0210.00, 23/031/0220.00, 23/031/0225.00, 23/031/0230.00, 23/031/0235.01, 23/031/0235.02, 23/031/0240.01, 23/031/0240.02, 23/031/0245.01, 23/031/0245.02, 23/031/0251.00, 23/031/0252.03, 23/031/0252.04, 23/031/0252.05, 23/031/0252.06, 23/031/0253.00, 23/031/0254.00, 23/031/0260.00, 23/031/0270.00, 23/031/0280.01, 23/031/0280.03, 23/031/0280.04, 23/031/0290.00, 23/031/0301.01, 23/031/0301.02, 23/031/0302.01, 23/031/0302.03, 23/031/0302.04, 23/031/0302.05, 23/031/0303.00, 23/031/0310.00, 23/031/0320.01, 23/031/0320.02, 23/031/0330.00, 23/031/0340.02, 23/031/0340.03, 23/031/0340.04, 23/031/0340.05, 23/031/0340.06, 23/031/0350.01, 23/031/0350.02, 23/031/0360.02, 23/031/0360.03, 23/031/0360.04, 23/031/0370.00, 23/031/0380.01, 23/031/0380.02, 23/031/9901.00



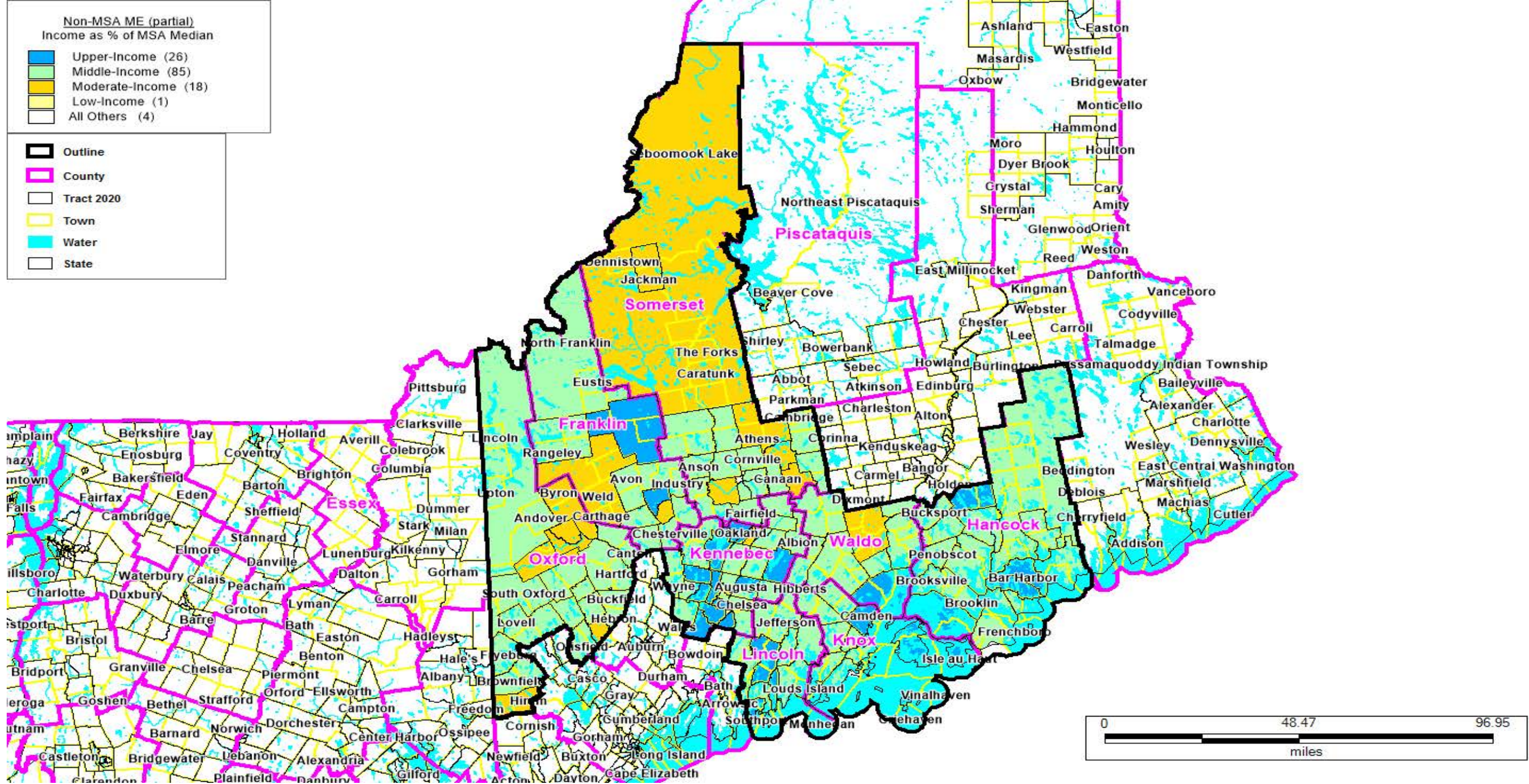
A map of Non-MSA Aroostook County ME
 Income as % of the MSA Median: Upper-Income (1), Middle-Income (14), Moderate-Income (9), Low-Income (0)
 Outline - shown in a Black outline, County - shown in a pink outline, Tract 2020 - shown in a Black outline, Town - shown in a yellow outline, Water - shown in a blue outline, State - shown in a Black outline

MAINE

Non-MSA Aroostook County ME

FORMAT: STATECODE/COUNTYCODE/TRACTCODE

23/003/9501.00, 23/003/9502.00, 23/003/9503.00, 23/003/9504.00, 23/003/9506.00, 23/003/9507.00, 23/003/9509.00,
23/003/9510.00, 23/003/9511.00, 23/003/9512.00, 23/003/9513.00, 23/003/9514.00, 23/003/9516.00, 23/003/9517.00,
23/003/9518.00, 23/003/9519.00, 23/003/9520.00, 23/003/9521.00, 23/003/9523.00, 23/003/9524.00, 23/003/9525.00,
23/003/9526.00, 23/003/9527.00, 23/003/9529.00



A map of Non-MSA ME (partial)

Income as % of the MSA Median: Upper-Income (26), Middle-Income (85), Moderate-Income (18), Low-Income (1), All Others (4)

Outline - shown in a Black outline, County - shown in a pink outline, Tract 2020 - shown in a Black outline, Town - shown in a yellow outline, Water - shown in a blue outline, State - shown in a Black outline

MAINE

Non-MSA ME (partial)

FORMAT: STATECODE/COUNTYCODE/TRACTCODE

23/007/9701.01, 23/007/9701.02, 23/007/9706.01, 23/007/9706.02, 23/007/9710.00, 23/007/9711.00, 23/007/9712.01, 23/007/9712.02, 23/007/9713.00, 23/007/9714.00, 23/009/9651.00, 23/009/9652.00, 23/009/9653.00, 23/009/9654.00, 23/009/9655.03, 23/009/9655.04, 23/009/9657.00, 23/009/9658.00, 23/009/9659.00, 23/009/9660.00, 23/009/9661.00, 23/009/9662.00, 23/009/9663.00, 23/009/9664.00, 23/009/9665.00, 23/009/9666.00, 23/009/9667.00, 23/009/9900.00, 23/011/0101.00, 23/011/0102.00, 23/011/0103.00, 23/011/0104.00, 23/011/0105.00, 23/011/0106.01, 23/011/0106.02, 23/011/0107.00, 23/011/0108.01, 23/011/0108.03, 23/011/0108.04, 23/011/0109.00, 23/011/0110.00, 23/011/0120.00, 23/011/0130.00, 23/011/0140.01, 23/011/0140.02, 23/011/0145.00, 23/011/0150.00, 23/011/0155.00, 23/011/0160.00, 23/011/0170.00, 23/011/0180.00, 23/011/0190.00, 23/011/0200.00, 23/011/0205.00, 23/011/0210.00, 23/011/0220.00, 23/011/0230.01, 23/011/0230.02, 23/011/0241.01, 23/011/0241.02, 23/011/0242.01, 23/011/0242.02, 23/011/0250.01, 23/011/0250.02, 23/013/9702.00, 23/013/9703.01, 23/013/9703.02, 23/013/9704.01, 23/013/9704.02, 23/013/9705.00, 23/013/9706.00, 23/013/9707.00, 23/013/9708.00, 23/013/9709.00, 23/013/9710.00, 23/013/9711.00, 23/013/9900.00
23/015/9751.00, 23/015/9752.00, 23/015/9753.00, 23/015/9754.00, 23/015/9755.00, 23/015/9756.00, 23/015/9757.00, 23/015/9758.00, 23/015/9762.00, 23/015/9900.00, 23/017/9651.00, 23/017/9654.00, 23/017/9655.00, 23/017/9656.00, 23/017/9657.00, 23/017/9658.00, 23/017/9659.00, 23/017/9660.01, 23/017/9660.02, 23/017/9661.00, 23/017/9662.00, 23/017/9663.00, 23/017/9664.01, 23/017/9664.02, 23/017/9665.00, 23/017/9666.00, 23/017/9667.00, 23/017/9668.00, 23/017/9669.00, 23/025/9653.01, 23/025/9653.02, 23/025/9656.00, 23/025/9657.00, 23/025/9658.00, 23/025/9659.00, 23/025/9660.00, 23/025/9661.00, 23/025/9662.00, 23/025/9663.00, 23/025/9664.00, 23/025/9665.00, 23/025/9666.01, 23/025/9666.02, 23/025/9667.01, 23/025/9667.02, 23/025/9668.01, 23/025/9668.02, 23/025/9669.00, 23/025/9670.00, 23/027/0410.00, 23/027/0420.00, 23/027/0430.00, 23/027/0440.00, 23/027/0450.00, 23/027/0460.01, 23/027/0460.02, 23/027/0470.00