

A map of MSA 31700 Manchester-Nashua NH

Income as % of the MSA Median: Upper-Income (27), Middle-Income (45), Moderate-Income (21), Low-Income (9), All Others (1)

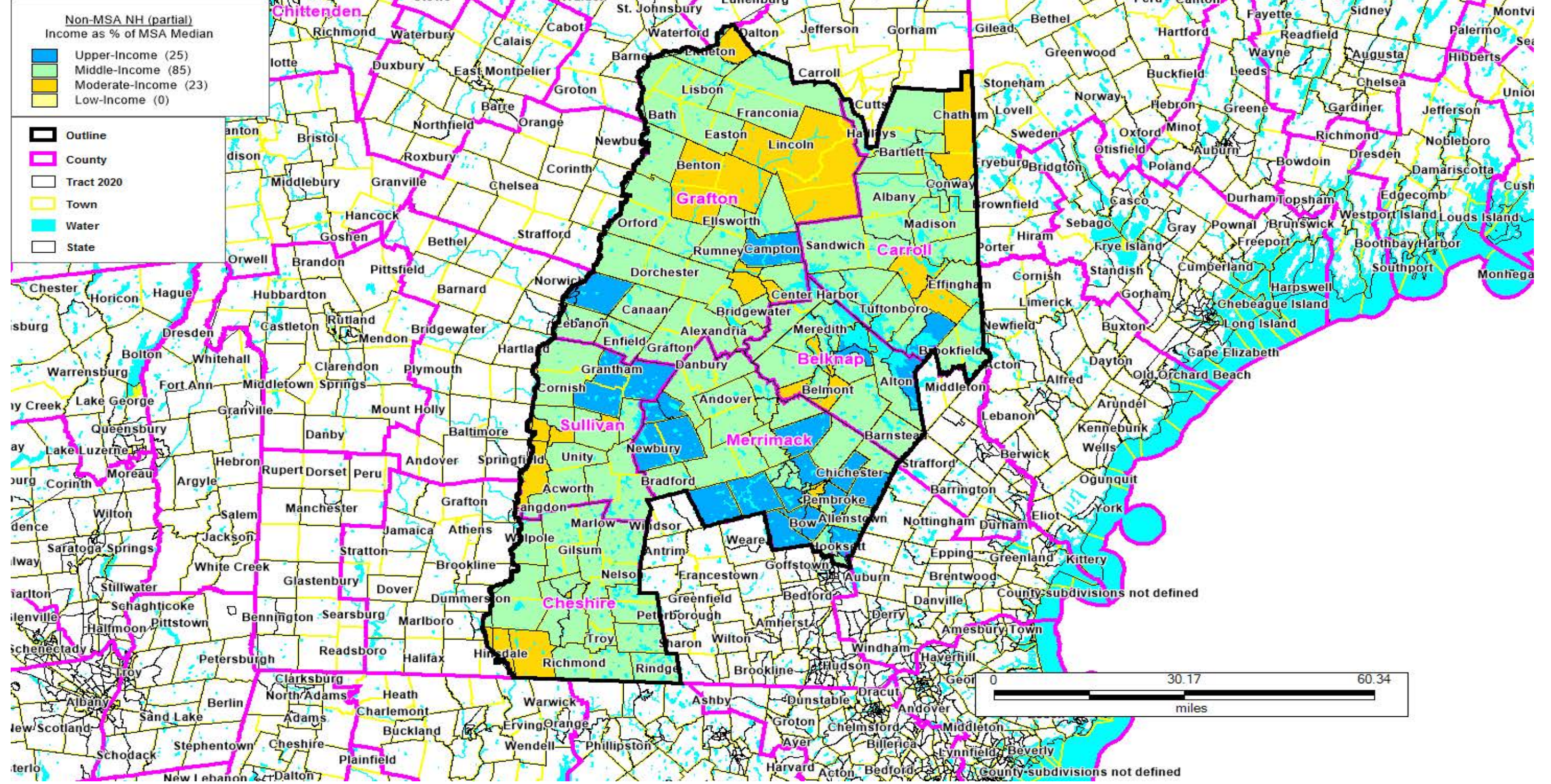
Outline - shown in a Black outline, County - shown in a pink outline, Tract 2020 - shown in a Black outline, Town - shown in a yellow outline, Water - shown in a blue outline, State - shown in a Black outline

NEW HAMPSHIRE

MSA 31700 Manchester-Nashua NH

FORMAT: STATECODE/COUNTYCODE/TRACTCODE

33/011/0001.03, 33/011/0001.04, 33/011/0002.02, 33/011/0002.03, 33/011/0002.04, 33/011/0003.00, 33/011/0006.00, 33/011/0007.00, 33/011/0008.00, 33/011/0009.01, 33/011/0009.02, 33/011/0010.00, 33/011/0011.00, 33/011/0012.00, 33/011/0013.00, 33/011/0014.00, 33/011/0015.00, 33/011/0016.00, 33/011/0017.00, 33/011/0018.00, 33/011/0019.00, 33/011/0020.00, 33/011/0021.00, 33/011/0022.00, 33/011/0023.00, 33/011/0024.00, 33/011/0025.00, 33/011/0026.00, 33/011/0027.01, 33/011/0027.02, 33/011/0028.01, 33/011/0028.02, 33/011/0029.01, 33/011/0029.02, 33/011/0029.03, 33/011/0101.00, 33/011/0102.01, 33/011/0102.02, 33/011/0103.01, 33/011/0103.02, 33/011/0104.00, 33/011/0105.00, 33/011/0106.00, 33/011/0107.00, 33/011/0108.01, 33/011/0108.02, 33/011/0109.00, 33/011/0110.00, 33/011/0111.01, 33/011/0111.02, 33/011/0112.00, 33/011/0113.00, 33/011/0114.01, 33/011/0114.02, 33/011/0115.00, 33/011/0121.01, 33/011/0121.02, 33/011/0122.01, 33/011/0122.02, 33/011/0123.01, 33/011/0123.02, 33/011/0131.01, 33/011/0131.02, 33/011/0141.01, 33/011/0141.02, 33/011/0142.01, 33/011/0142.02, 33/011/0143.01, 33/011/0143.02, 33/011/0151.00, 33/011/0152.00, 33/011/0161.00, 33/011/0162.02, 33/011/0162.03, 33/011/0162.04, 33/011/0171.01, 33/011/0171.02, 33/011/0180.01, 33/011/0180.02, 33/011/0185.01, 33/011/0185.02, 33/011/0190.00, 33/011/0195.01, 33/011/0195.02, 33/011/0200.00, 33/011/0210.01, 33/011/0210.02, 33/011/0215.00, 33/011/0220.00, 33/011/0225.01, 33/011/0225.02, 33/011/0230.01, 33/011/0230.02, 33/011/0240.00, 33/011/0250.00, 33/011/0255.01, 33/011/0255.02, 33/011/2001.01, 33/011/2002.01, 33/011/2003.00, 33/011/2004.00, 33/011/2005.00, 33/011/9801.01



A map of Non-MSA NH (partial)
 Income as % of the MSA Median: Upper-Income (25), Middle-Income (85), Moderate-Income (23), Low-Income (0)
 Outline - shown in a Black outline, County - shown in a pink outline, Tract 2020 - shown in a Black outline, Town - shown in a yellow outline, Water - shown in a blue outline, State - shown in a Black outline

NEW HAMPSHIRE

Non-MSA NH (partial)

FORMAT: STATECODE/COUNTYCODE/TRACTCODE

33/001/9651.00, 33/001/9652.00, 33/001/9653.00, 33/001/9654.00, 33/001/9655.98, 33/001/9656.00, 33/001/9657.00,
33/001/9658.01, 33/001/9658.02, 33/001/9659.00, 33/001/9660.00, 33/001/9661.00, 33/001/9662.00, 33/001/9664.01,
33/001/9664.03, 33/001/9664.04, 33/001/9665.01, 33/001/9665.02, 33/003/9551.01, 33/003/9551.02, 33/003/9553.01,
33/003/9553.02, 33/003/9554.01, 33/003/9554.02, 33/003/9555.00, 33/003/9556.01, 33/003/9556.02, 33/003/9558.01,
33/003/9558.02, 33/003/9559.01, 33/003/9559.02, 33/003/9560.00, 33/003/9561.01, 33/003/9561.02, 33/003/9563.01,
33/003/9563.02, 33/003/9564.00, 33/005/9701.00, 33/005/9702.00, 33/005/9704.01, 33/005/9704.02, 33/005/9705.00,
33/005/9706.00, 33/005/9707.00, 33/005/9708.00, 33/005/9709.01, 33/005/9709.02, 33/005/9710.00, 33/005/9711.00,
33/005/9713.00, 33/005/9714.02, 33/005/9714.03, 33/005/9715.00, 33/005/9716.00, 33/005/9717.00, 33/009/9601.01,
33/009/9601.02, 33/009/9602.00, 33/009/9603.00, 33/009/9604.01, 33/009/9604.02, 33/009/9605.00, 33/009/9606.00,
33/009/9607.00, 33/009/9608.01, 33/009/9608.02, 33/009/9609.00, 33/009/9610.01, 33/009/9610.02, 33/009/9611.01,
33/009/9611.02, 33/009/9612.01, 33/009/9612.02, 33/009/9613.00, 33/009/9614.00, 33/009/9615.00, 33/009/9616.01
33/009/9616.03, 33/009/9616.04, 33/009/9617.01, 33/009/9617.02, 33/009/9618.01, 33/009/9618.02, 33/013/0030.01,
33/013/0030.06, 33/013/0031.00, 33/013/0032.01, 33/013/0032.02, 33/013/0300.00, 33/013/0310.01, 33/013/0310.02,
33/013/0321.00, 33/013/0322.00, 33/013/0323.00, 33/013/0324.00, 33/013/0325.00, 33/013/0326.00, 33/013/0327.01,
33/013/0327.06, 33/013/0328.00, 33/013/0329.00, 33/013/0330.00, 33/013/0340.00, 33/013/0350.00, 33/013/0360.00,
33/013/0370.00, 33/013/0380.00, 33/013/0385.00, 33/013/0390.00, 33/013/0400.00, 33/013/0405.01, 33/013/0405.02,
33/013/0410.01, 33/013/0410.02, 33/013/0415.00, 33/013/0425.00, 33/013/0430.01, 33/013/0430.02, 33/013/0440.00,
33/013/0441.00, 33/013/0442.00, 33/013/0443.00, 33/019/9751.00, 33/019/9752.00, 33/019/9753.00, 33/019/9754.01,
33/019/9754.02, 33/019/9755.00, 33/019/9756.00, 33/019/9757.00, 33/019/9758.00, 33/019/9759.01, 33/019/9759.02