

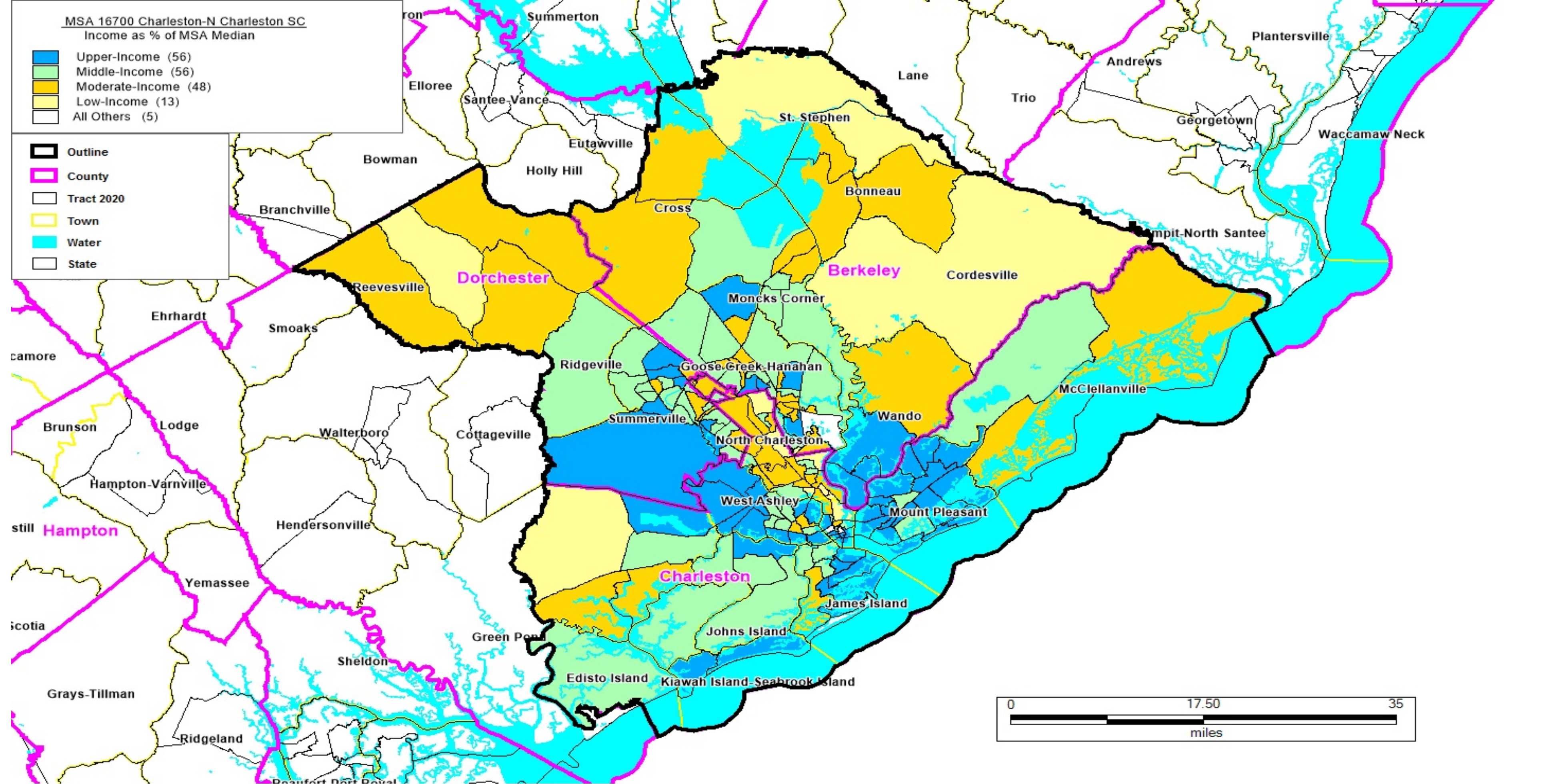
A map of MSA 12260 Augusta SC (partial)
 Income as % of the MSA Median: Upper-Income (7), Middle-Income (21), Moderate-Income (11), Low-Income (2), All Others (2)
 Outline - shown in a Black outline, County - shown in a pink outline, Tract 2020 - shown in a Black outline, Town - shown in a yellow outline, Water - shown in a blue outline, State - shown in a Black outline

SOUTH CAROLINA

MSA 12260 Augusta SC (partial)

FORMAT: STATECODE/COUNTYCODE/TRACTCODE

45/003/0201.00, 45/003/0202.00, 45/003/0203.01, 45/003/0203.03, 45/003/0203.04, 45/003/0204.01, 45/003/0204.02, 45/003/0205.00, 45/003/0206.01, 45/003/0206.03, 45/003/0206.04, 45/003/0207.01, 45/003/0207.02, 45/003/0208.01, 45/003/0208.02, 45/003/0209.01, 45/003/0209.03, 45/003/0209.04, 45/003/0210.01, 45/003/0210.03, 45/003/0210.04, 45/003/0211.01, 45/003/0211.02, 45/003/0212.01, 45/003/0212.02, 45/003/0212.04, 45/003/0212.05, 45/003/0213.00, 45/003/0214.01, 45/003/0214.02, 45/003/0215.00, 45/003/0216.01, 45/003/0216.03, 45/003/0216.04, 45/003/0217.00, 45/003/0218.00, 45/003/0219.01, 45/003/0219.02, 45/003/0220.01, 45/003/0220.03, 45/003/0220.04, 45/003/0221.00, 45/003/9801.00



A map of MSA 16700 Charleston-North Charleston SC

Income as % of the MSA Median: Upper-Income (56), Middle-Income (56), Moderate-Income (48), Low-Income (13), All Others (5)

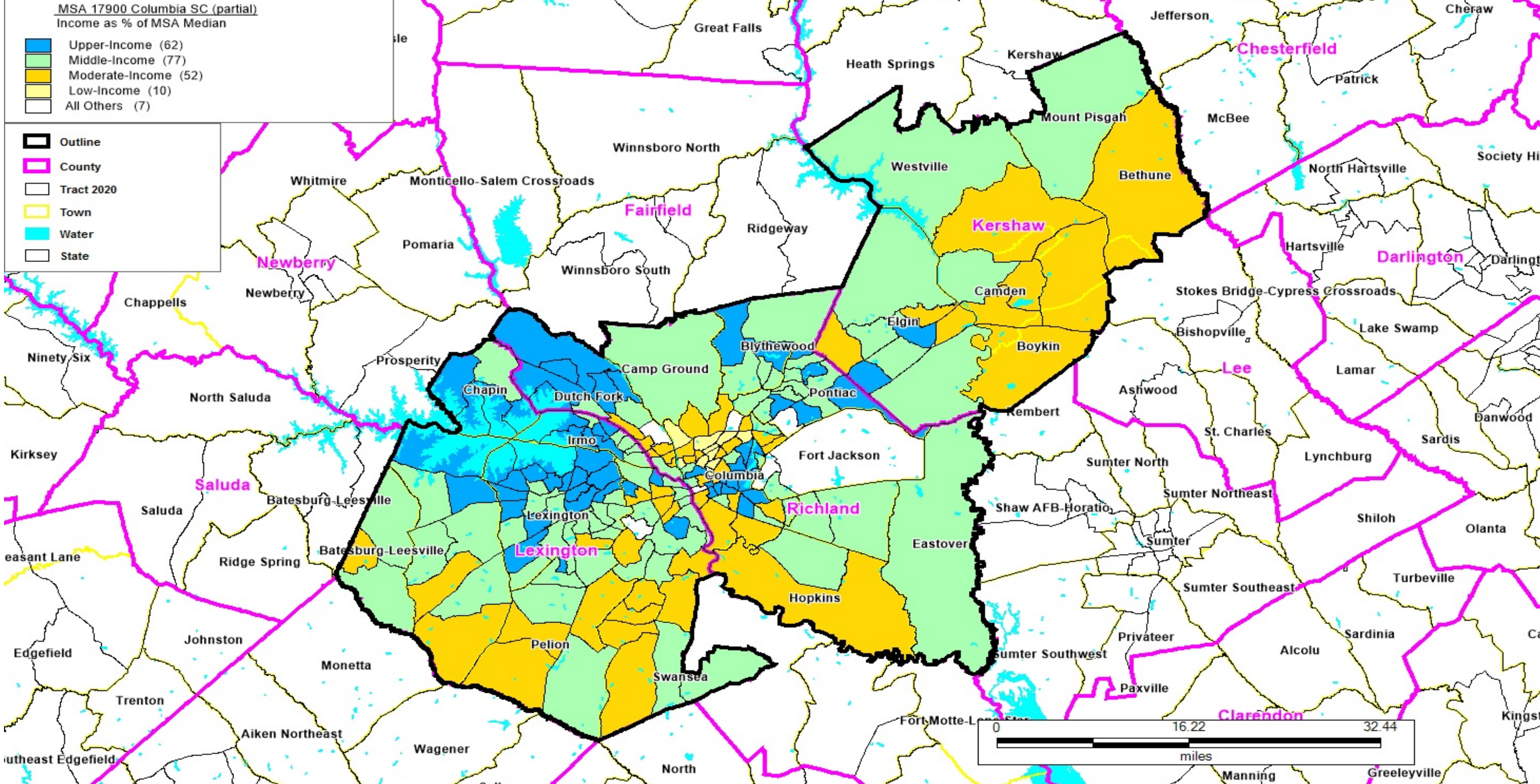
Outline - shown in a Black outline, County - shown in a pink outline, Tract 2020 - shown in a Black outline, Town - shown in a yellow outline, Water - shown in a blue outline, State - shown in a Black outline

SOUTH CAROLINA

MSA 16700 Charleston-N Charleston SC

FORMAT: STATECODE/COUNTYCODE/TRACTCODE

45/015/0201.01, 45/015/0201.02, 45/015/0202.01, 45/015/0202.02, 45/015/0203.01, 45/015/0203.03, 45/015/0203.04, 45/015/0204.01, 45/015/0204.04, 45/015/0204.05, 45/015/0204.06, 45/015/0204.07, 45/015/0205.03, 45/015/0205.04, 45/015/0205.05, 45/015/0205.06, 45/015/0206.01, 45/015/0206.02, 45/015/0207.07, 45/015/0207.10, 45/015/0207.11, 45/015/0207.12, 45/015/0207.13, 45/015/0207.14, 45/015/0207.15, 45/015/0207.16, 45/015/0207.17, 45/015/0207.18, 45/015/0207.19, 45/015/0207.20, 45/015/0207.21, 45/015/0207.22, 45/015/0207.23, 45/015/0207.24, 45/015/0207.25, 45/015/0208.04, 45/015/0208.06, 45/015/0208.07, 45/015/0208.08, 45/015/0208.09, 45/015/0208.10, 45/015/0208.11, 45/015/0208.12, 45/015/0209.01, 45/015/0209.03, 45/015/0209.04, 45/015/0210.00, 45/015/9801.00, 45/019/0001.00, 45/019/0002.00, 45/019/0004.00, 45/019/0005.00, 45/019/0006.00, 45/019/0007.00, 45/019/0009.00, 45/019/0010.00, 45/019/0011.00, 45/019/0015.00, 45/019/0019.01, 45/019/0019.02, 45/019/0020.02, 45/019/0020.04, 45/019/0020.05, 45/019/0020.06, 45/019/0020.07, 45/019/0020.08, 45/019/0020.09, 45/019/0021.03, 45/019/0021.04, 45/019/0021.05, 45/019/0021.06, 45/019/0021.07, 45/019/0021.08, 45/019/0022.00, 45/019/0023.00, 45/019/0024.01, 45/019/0024.02, 45/019/0025.03, 45/019/0025.04, 45/019/0026.04, 45/019/0026.05, 45/019/0026.06, 45/019/0026.11, 45/019/0026.12, 45/019/0026.13, 45/019/0026.14, 45/019/0027.01, 45/019/0027.02, 45/019/0028.01, 45/019/0028.02, 45/019/0029.00, 45/019/0030.00, 45/019/0031.04, 45/019/0031.05, 45/019/0031.06, 45/019/0031.07, 45/019/0031.08, 45/019/0031.09, 45/019/0031.10, 45/019/0031.11, 45/019/0031.13, 45/019/0031.15, 45/019/0031.16, 45/019/0031.17, 45/019/0032.00, 45/019/0033.00, 45/019/0034.00, 45/019/0035.00, 45/019/0036.00, 45/019/0037.00, 45/019/0038.00, 45/019/0039.00, 45/019/0040.00, 45/019/0043.00, 45/019/0044.00, 45/019/0046.07, 45/019/0046.09, 45/019/0046.10, 45/019/0046.12, 45/019/0046.13, 45/019/0046.14, 45/019/0046.15, 45/019/0046.16, 45/019/0046.17, 45/019/0046.18, 45/019/0046.19, 45/019/0046.20, 45/019/0046.21, 45/019/0046.22, 45/019/0047.01, 45/019/0047.02, 45/019/0048.00, 45/019/0049.01, 45/019/0049.02, 45/019/0050.01, 45/019/0050.02, 45/019/0051.00, 45/019/0053.00, 45/019/0054.00, 45/019/0055.00, 45/019/0056.01, 45/019/0056.02, 45/019/0057.01, 45/019/0057.02, 45/019/0058.00, 45/019/0059.00, 45/019/9901.00, 45/035/0101.00, 45/035/0102.00, 45/035/0103.01, 45/035/0103.02, 45/035/0104.00, 45/035/0105.01, 45/035/0105.03, 45/035/0105.05, 45/035/0105.06, 45/035/0105.07, 45/035/0105.08, 45/035/0106.03, 45/035/0106.04, 45/035/0106.06, 45/035/0106.07, 45/035/0106.08, 45/035/0107.00, 45/035/0108.01, 45/035/0108.07, 45/035/0108.08, 45/035/0108.09, 45/035/0108.13, 45/035/0108.14, 45/035/0108.15, 45/035/0108.17, 45/035/0108.18, 45/035/0108.19, 45/035/0108.20, 45/035/0108.21, 45/035/0108.22, 45/035/0108.23



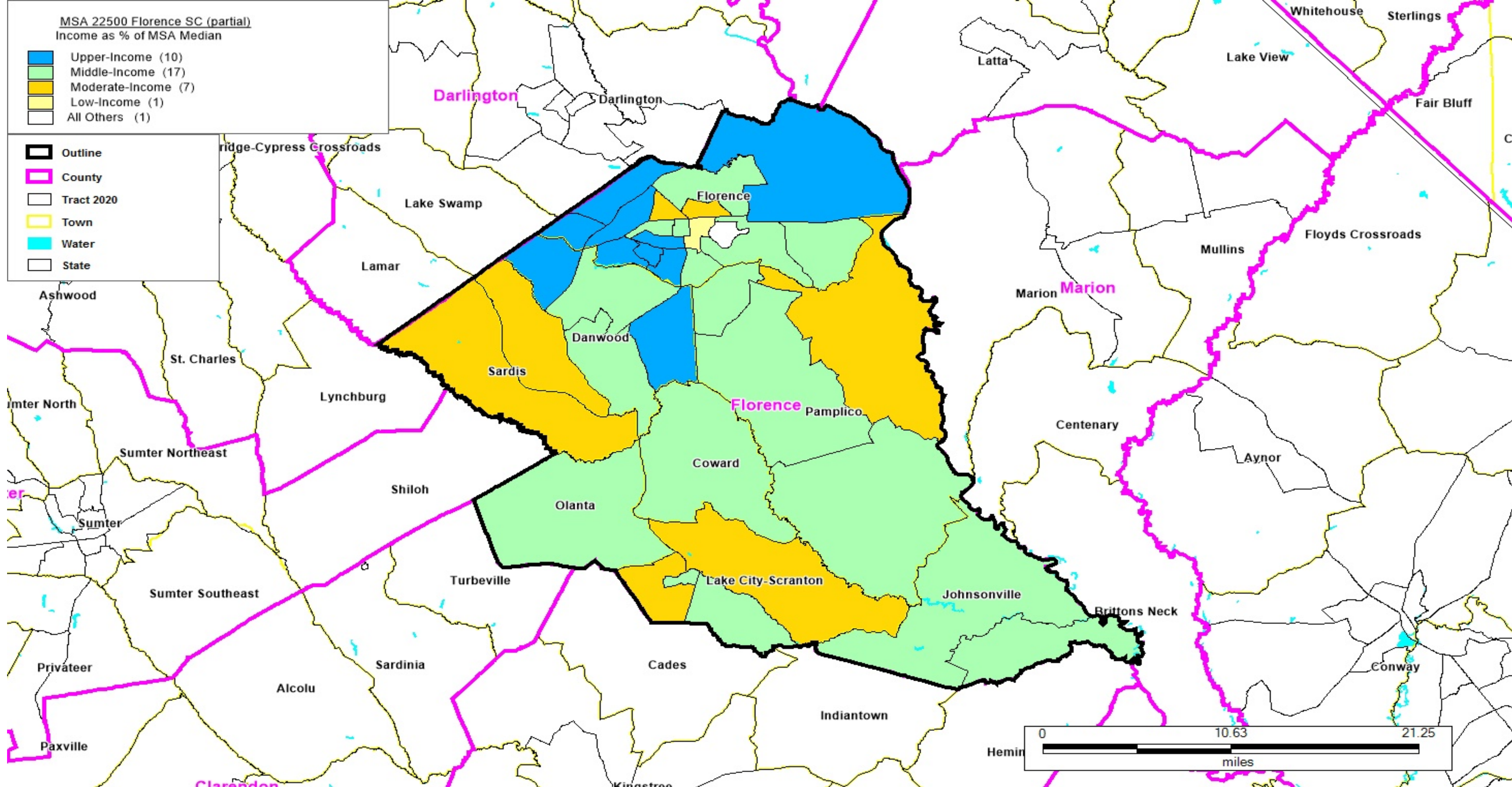
A map of MSA 17900 Columbia SC (partial)
Income as % of the MSA Median: Upper-Income (62), Middle-Income (77), Moderate-Income (52), Low-Income (10), All Others (7)
Outline - shown in a Black outline, County - shown in a pink outline, Tract 2020 - shown in a Black outline, Town - shown in a yellow outline, Water - shown in a blue outline, State - shown in a Black outline

SOUTH CAROLINA

MSA 17900 Columbia SC (partial)

FORMAT: STATECODE/COUNTYCODE/TRACTCODE

45/055/9701.00, 45/055/9702.00, 45/055/9703.00, 45/055/9704.01, 45/055/9704.02, 45/055/9704.03, 45/055/9705.00, 45/055/9706.01, 45/055/9706.03, 45/055/9706.04, 45/055/9707.00, 45/055/9708.00, 45/055/9709.02, 45/055/9709.05, 45/055/9709.06, 45/055/9709.07, 45/055/9709.08, 45/055/9709.09, 45/063/0201.00, 45/063/0202.01, 45/063/0202.02, 45/063/0203.00, 45/063/0205.05, 45/063/0205.06, 45/063/0205.08, 45/063/0205.09, 45/063/0205.10, 45/063/0205.11, 45/063/0205.12, 45/063/0205.13, 45/063/0206.01, 45/063/0206.02, 45/063/0206.04, 45/063/0206.05, 45/063/0207.03, 45/063/0207.05, 45/063/0207.06, 45/063/0207.07, 45/063/0207.08, 45/063/0208.01, 45/063/0208.02, 45/063/0208.03, 45/063/0208.04, 45/063/0208.06, 45/063/0208.07, 45/063/0209.04, 45/063/0209.05, 45/063/0209.06, 45/063/0209.08, 45/063/0209.09, 45/063/0209.10, 45/063/0209.11, 45/063/0209.12, 45/063/0209.13, 45/063/0210.19, 45/063/0210.20, 45/063/0210.21, 45/063/0210.23, 45/063/0210.25, 45/063/0210.28, 45/063/0210.29, 45/063/0210.30, 45/063/0210.31, 45/063/0210.32, 45/063/0210.33, 45/063/0210.34, 45/063/0210.35, 45/063/0210.36, 45/063/0210.37, 45/063/0210.38, 45/063/0210.39, 45/063/0210.40, 45/063/0210.41, 45/063/0210.42, 45/063/0210.43, 45/063/0210.44, 45/063/0210.45, 45/063/0210.46, 45/063/0210.47, 45/063/0210.48, 45/063/0210.49, 45/063/0210.50, 45/063/0210.51, 45/063/0210.52, 45/063/0211.06, 45/063/0211.09, 45/063/0211.10, 45/063/0211.11, 45/063/0211.12, 45/063/0211.13, 45/063/0211.14, 45/063/0211.15, 45/063/0211.16, 45/063/0212.04, 45/063/0212.05, 45/063/0212.06, 45/063/0212.07, 45/063/0212.08, 45/063/0213.03, 45/063/0213.05, 45/063/0213.06, 45/063/0213.07, 45/063/0213.09, 45/063/0213.10, 45/063/0213.11, 45/063/0213.12, 45/063/0214.02, 45/063/0214.03, 45/063/0214.04, 45/063/9801.00, 45/079/0001.00, 45/079/0002.00, 45/079/0003.00, 45/079/0004.00, 45/079/0005.00, 45/079/0006.00, 45/079/0007.00, 45/079/0009.00, 45/079/0010.00, 45/079/0011.00, 45/079/0012.00, 45/079/0013.00, 45/079/0016.00, 45/079/0021.00, 45/079/0022.00, 45/079/0023.00, 45/079/0024.00, 45/079/0025.00, 45/079/0026.02, 45/079/0026.05, 45/079/0027.00, 45/079/0028.00, 45/079/0029.00, 45/079/0030.00, 45/079/0031.00, 45/079/0101.04, 45/079/0101.05, 45/079/0101.06, 45/079/0101.07, 45/079/0101.08, 45/079/0101.09, 45/079/0102.00, 45/079/0103.04, 45/079/0103.05, 45/079/0103.08, 45/079/0103.10, 45/079/0103.11, 45/079/0103.12, 45/079/0103.13, 45/079/0103.14, 45/079/0103.15, 45/079/0104.03, 45/079/0104.07, 45/079/0104.08, 45/079/0104.11, 45/079/0104.12, 45/079/0104.13, 45/079/0104.14, 45/079/0105.01, 45/079/0105.02, 45/079/0106.00, 45/079/0107.01, 45/079/0107.02, 45/079/0107.03, 45/079/0108.03, 45/079/0108.04, 45/079/0108.05, 45/079/0108.06, 45/079/0109.00, 45/079/0110.00, 45/079/0111.01, 45/079/0111.02, 45/079/0112.01, 45/079/0112.02, 45/079/0113.03, 45/079/0113.04, 45/079/0113.05, 45/079/0113.06, 45/079/0113.07, 45/079/0114.07, 45/079/0114.11, 45/079/0114.12, 45/079/0114.13, 45/079/0114.14, 45/079/0114.17, 45/079/0114.18, 45/079/0114.19, 45/079/0114.20, 45/079/0114.21, 45/079/0114.22, 45/079/0114.23, 45/079/0114.24, 45/079/0114.25, 45/079/0115.01, 45/079/0115.02, 45/079/0116.03, 45/079/0116.04, 45/079/0116.06, 45/079/0116.07, 45/079/0116.08, 45/079/0117.01, 45/079/0117.02, 45/079/0118.01, 45/079/0118.02, 45/079/0119.01, 45/079/0119.02, 45/079/0120.00, 45/079/9801.00



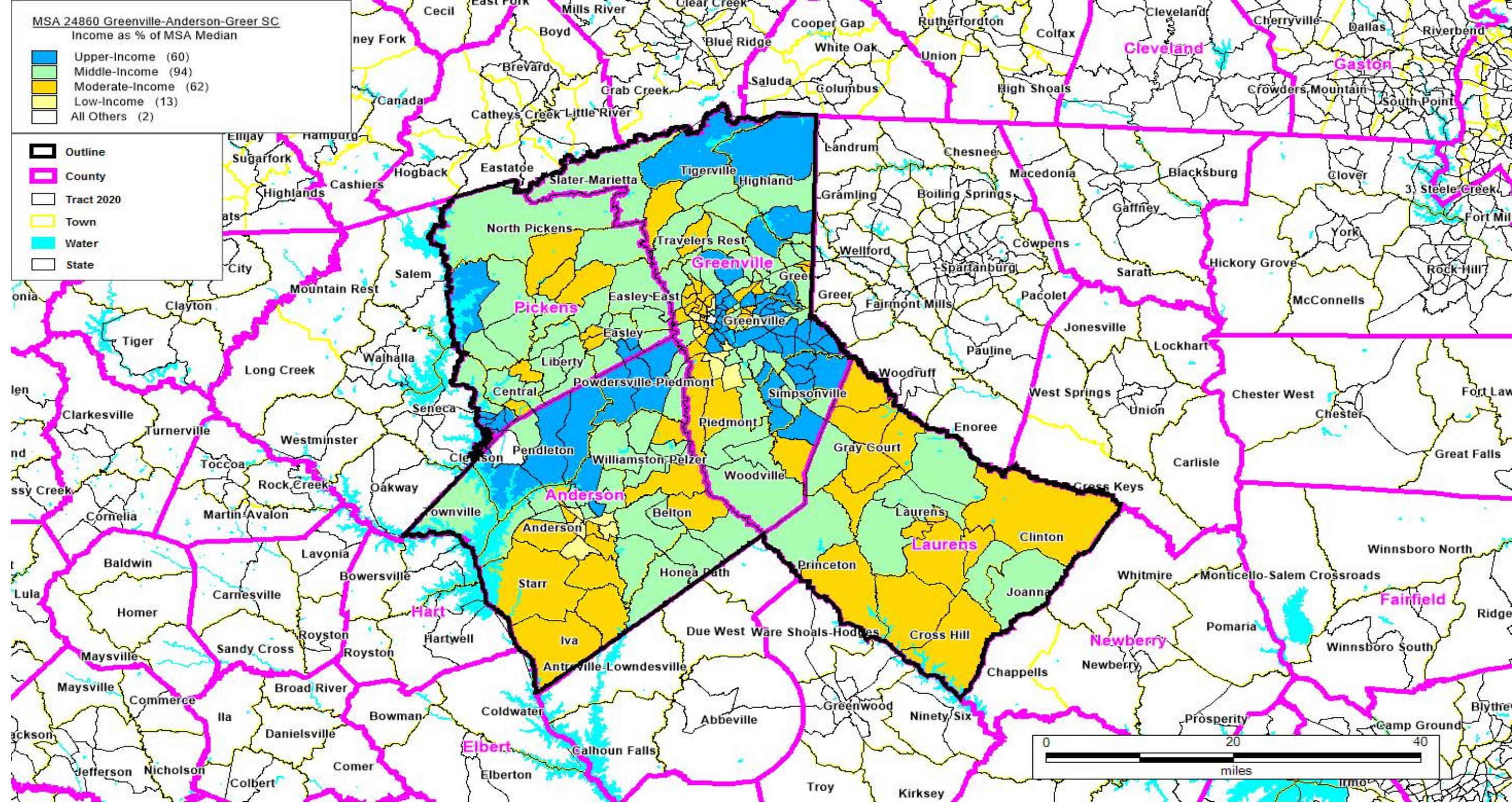
A map of MSA 22500 Florence SC (partial)
 Income as % of the MSA Median: Upper-Income (10), Middle-Income (17), Moderate-Income (7), Low-Income (1), All Others (1)
 Outline - shown in a Black outline, County - shown in a pink outline, Tract 2020 - shown in a Black outline, Town - shown in a yellow outline, Water - shown in a blue outline, State - shown in a Black outline

SOUTH CAROLINA

MSA 22500 Florence SC (partial)

FORMAT: STATECODE/COUNTYCODE/TRACTCODE

45/041/0001.01, 45/041/0001.02, 45/041/0002.01, 45/041/0002.02, 45/041/0003.00, 45/041/0004.00, 45/041/0005.01,
45/041/0005.02, 45/041/0006.00, 45/041/0007.00, 45/041/0008.00, 45/041/0009.00, 45/041/0010.00, 45/041/0011.00,
45/041/0012.00, 45/041/0013.00, 45/041/0014.00, 45/041/0015.03, 45/041/0015.04, 45/041/0015.05, 45/041/0015.06,
45/041/0016.01, 45/041/0016.02, 45/041/0017.00, 45/041/0018.00, 45/041/0019.01, 45/041/0019.02, 45/041/0020.00,
45/041/0022.02, 45/041/0022.03, 45/041/0022.04, 45/041/0023.00, 45/041/0024.00, 45/041/0025.00, 45/041/0026.00,
45/041/9801.00



A map of MSA 24860 Greenville-Anderson-Greer SC
 Income as % of the MSA Median: Upper-Income (60), Middle-Income (94), Moderate-Income (62), Low-Income (13), All Others (2)
 Outline - shown in a Black outline, County - shown in a pink outline, Tract 2020 - shown in a Black outline, Town - shown in a yellow outline, Water - shown in a blue outline, State - shown in a Black outline

SOUTH CAROLINA

MSA 24860 Greenville-Anderson-Greer SC

FORMAT: STATECODE/COUNTYCODE/TRACTCODE

45/007/0002.00, 45/007/0003.00, 45/007/0005.00, 45/007/0006.00, 45/007/0007.01, 45/007/0007.02, 45/007/0008.00, 45/007/0009.00, 45/007/0010.00, 45/007/0011.00, 45/007/0101.03, 45/007/0101.05, 45/007/0101.06, 45/007/0101.07, 45/007/0101.08, 45/007/0102.00, 45/007/0103.00, 45/007/0104.03, 45/007/0104.04, 45/007/0104.05, 45/007/0104.06, 45/007/0105.01, 45/007/0105.02, 45/007/0106.01, 45/007/0106.02, 45/007/0107.01, 45/007/0107.02, 45/007/0108.00, 45/007/0109.00, 45/007/0110.01, 45/007/0110.02, 45/007/0111.00, 45/007/0112.01, 45/007/0112.03, 45/007/0112.04, 45/007/0113.01, 45/007/0113.02, 45/007/0114.01, 45/007/0114.02, 45/007/0115.01, 45/007/0115.02, 45/007/0116.00, 45/007/0117.01, 45/007/0117.02, 45/007/0118.00, 45/007/0119.01, 45/007/0119.02, 45/007/0120.01, 45/007/0120.02, 45/007/0122.00, 45/007/0123.00, 45/045/0001.00, 45/045/0002.00, 45/045/0004.00, 45/045/0005.00, 45/045/0007.00, 45/045/0008.00, 45/045/0009.00, 45/045/0010.00, 45/045/0011.01, 45/045/0011.02, 45/045/0012.03, 45/045/0012.04, 45/045/0012.05, 45/045/0013.02, 45/045/0014.00, 45/045/0015.01, 45/045/0015.02, 45/045/0016.00, 45/045/0017.00, 45/045/0018.03, 45/045/0018.04, 45/045/0018.05, 45/045/0018.07, 45/045/0018.08, 45/045/0018.09, 45/045/0018.10, 45/045/0019.00, 45/045/0020.01, 45/045/0020.03, 45/045/0020.05, 45/045/0021.03, 45/045/0021.04, 45/045/0021.05, 45/045/0021.06, 45/045/0021.07, 45/045/0021.08, 45/045/0022.02, 45/045/0022.03, 45/045/0022.04, 45/045/0023.01, 45/045/0023.02, 45/045/0023.03, 45/045/0023.04, 45/045/0024.03, 45/045/0024.04, 45/045/0024.05, 45/045/0024.06, 45/045/0025.03, 45/045/0025.04, 45/045/0025.05, 45/045/0025.06, 45/045/0025.07, 45/045/0026.02, 45/045/0026.04, 45/045/0026.06, 45/045/0026.09, 45/045/0026.10, 45/045/0026.11, 45/045/0026.12, 45/045/0026.13, 45/045/0027.01, 45/045/0027.03, 45/045/0027.04, 45/045/0028.04, 45/045/0028.05, 45/045/0028.11, 45/045/0028.12, 45/045/0028.13, 45/045/0028.14, 45/045/0028.15, 45/045/0028.17, 45/045/0028.18, 45/045/0028.19, 45/045/0028.20, 45/045/0028.21, 45/045/0028.22, 45/045/0029.01, 45/045/0029.03, 45/045/0029.04, 45/045/0029.05, 45/045/0030.05, 45/045/0030.08, 45/045/0030.09, 45/045/0030.10, 45/045/0030.11, 45/045/0030.12, 45/045/0030.13, 45/045/0030.14, 45/045/0030.16, 45/045/0030.17, 45/045/0031.01, 45/045/0031.03, 45/045/0031.04, 45/045/0032.02, 45/045/0032.03, 45/045/0032.04, 45/045/0033.01, 45/045/0033.03, 45/045/0033.04, 45/045/0034.01, 45/045/0035.00, 45/045/0036.01, 45/045/0036.02, 45/045/0037.01, 45/045/0037.04, 45/045/0037.05, 45/045/0037.06, 45/045/0037.07, 45/045/0038.02, 45/045/0038.03, 45/045/0038.04, 45/045/0039.02, 45/045/0039.03, 45/045/0039.05, 45/045/0039.06, 45/045/0040.01, 45/045/0040.03, 45/045/0040.04, 45/045/0041.01, 45/045/0041.02, 45/045/0042.00, 45/045/0043.00, 45/045/0044.00, 45/059/9201.02, 45/059/9201.04, 45/059/9201.05, 45/059/9201.06, 45/059/9201.07, 45/059/9201.08, 45/059/9202.01, 45/059/9202.02, 45/059/9203.01, 45/059/9203.02, 45/059/9204.00, 45/059/9205.01, 45/059/9205.03, 45/059/9205.04, 45/059/9206.00, 45/059/9207.00, 45/059/9208.00, 45/059/9209.00, 45/059/9210.01, 45/059/9210.02, 45/077/0101.00, 45/077/0102.01, 45/077/0102.02, 45/077/0103.01, 45/077/0103.02, 45/077/0104.01, 45/077/0104.03, 45/077/0104.04, 45/077/0104.05, 45/077/0105.01, 45/077/0105.02, 45/077/0106.01, 45/077/0106.03, 45/077/0106.04, 45/077/0107.00, 45/077/0108.02, 45/077/0108.03, 45/077/0108.04, 45/077/0108.05, 45/077/0108.06, 45/077/0109.01, 45/077/0109.03, 45/077/0109.04, 45/077/0109.05, 45/077/0110.01, 45/077/0110.03, 45/077/0110.04, 45/077/0110.05, 45/077/0111.01, 45/077/0111.03, 45/077/0111.04, 45/077/0111.05, 45/077/0112.02, 45/077/0112.04, 45/077/0112.05, 45/077/0112.06, 45/077/0112.07