

A map of MSA 15540 Burlington-South Burlington VT  
 Income as % of the MSA Median: Upper-Income (13), Middle-Income (28), Moderate-Income (10), Low-Income (1), All Others (2)  
 Outline - shown in a Black outline, County - shown in a pink outline, Tract 2020 - shown in a Black outline, Town - shown in a yellow outline, Water - shown in a blue outline, State - shown in a Black outline



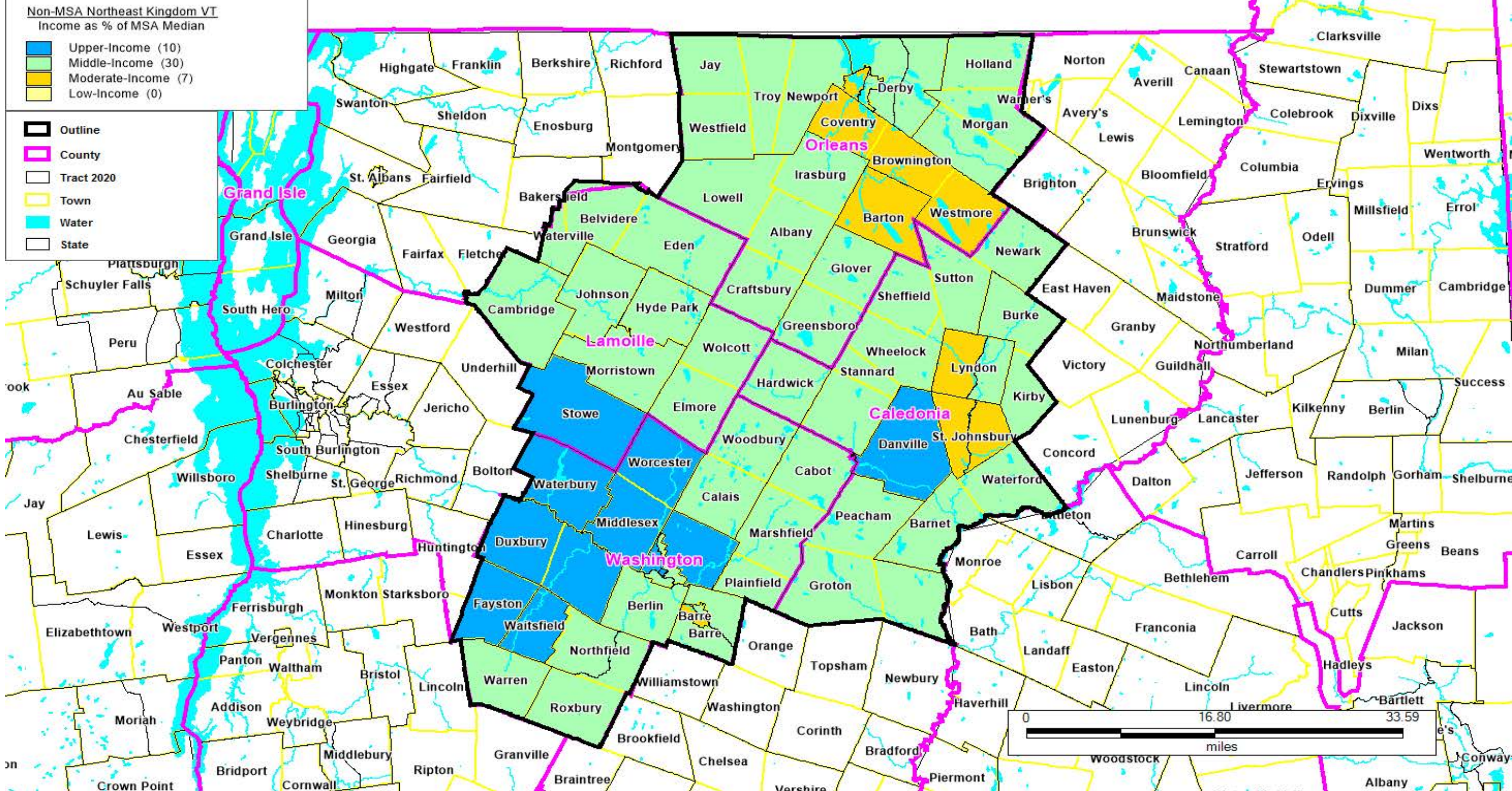
# VERMONT

## MSA 15540 Burlington-S Burlington VT

FORMAT: STATECODE/COUNTYCODE/TRACTCODE

50/007/0001.00, 50/007/0002.00, 50/007/0003.00, 50/007/0006.00, 50/007/0008.00, 50/007/0009.00, 50/007/0010.00,  
50/007/0011.00, 50/007/0021.01, 50/007/0021.03, 50/007/0021.04, 50/007/0022.01, 50/007/0022.02, 50/007/0023.01,  
50/007/0023.03, 50/007/0023.04, 50/007/0024.00, 50/007/0025.01, 50/007/0025.02, 50/007/0026.01, 50/007/0026.02,  
50/007/0027.01, 50/007/0027.02, 50/007/0028.00, 50/007/0029.00, 50/007/0030.00, 50/007/0031.01, 50/007/0031.02,  
50/007/0033.01, 50/007/0033.04, 50/007/0034.01, 50/007/0034.02, 50/007/0035.01, 50/007/0035.02, 50/007/0035.03,  
50/007/0036.00, 50/007/0039.00, 50/007/0040.02, 50/007/0041.00, 50/007/0042.00, 50/007/9800.00, 50/011/0101.01,  
50/011/0101.02, 50/011/0102.00, 50/011/0103.00, 50/011/0104.00, 50/011/0105.00, 50/011/0106.00, 50/011/0107.00,  
50/011/0108.00, 50/011/0109.00, 50/011/0110.00, 50/013/0201.00, 50/013/0202.00





A map of Non-MSA Northeast Kingdom VT  
Income as % of the MSA Median: Upper-Income (10), Middle-Income (30), Moderate-Income (7), Low-Income (0)  
Outline - shown in a Black outline, County - shown in a pink outline, Tract 2020 - shown in a Black outline, Town - shown in a yellow outline, Water - shown in a blue outline, State - shown in a Black outline



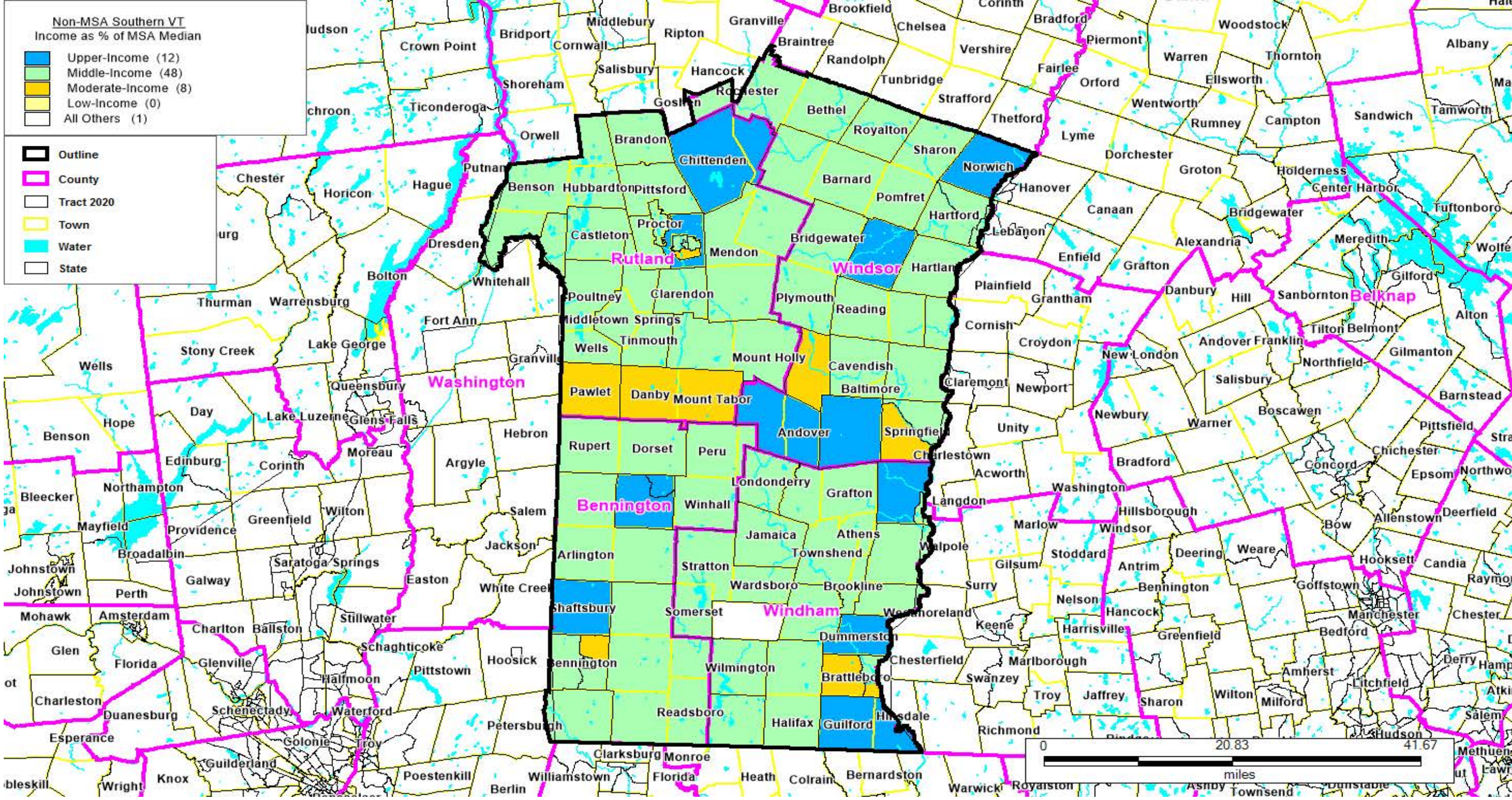
# VERMONT

## Non-MSA Northeast Kingdom VT

FORMAT: STATECODE/COUNTYCODE/TRACTCODE

50/005/9570.00, 50/005/9571.00, 50/005/9572.00, 50/005/9573.00, 50/005/9574.00, 50/005/9575.00, 50/005/9576.00,  
50/005/9577.00, 50/005/9578.00, 50/005/9579.00, 50/015/9530.00, 50/015/9531.00, 50/015/9532.00, 50/015/9533.00,  
50/015/9534.00, 50/015/9535.00, 50/015/9536.00, 50/019/9511.00, 50/019/9512.00, 50/019/9513.00, 50/019/9514.00,  
50/019/9515.00, 50/019/9516.00, 50/019/9517.00, 50/019/9518.00, 50/019/9519.00, 50/019/9520.00, 50/023/9540.00,  
50/023/9541.00, 50/023/9542.00, 50/023/9543.00, 50/023/9544.00, 50/023/9545.00, 50/023/9546.00, 50/023/9547.00,  
50/023/9548.00, 50/023/9549.00, 50/023/9550.00, 50/023/9551.00, 50/023/9552.00, 50/023/9553.00, 50/023/9554.00,  
50/023/9555.01, 50/023/9555.02, 50/023/9556.00, 50/023/9557.00, 50/023/9558.00





A map of Non-MSA Southern VT  
 Income as % of the MSA Median: Upper-Income (12), Middle-Income (48), Moderate-Income (8), Low-Income (0), All Others (1)  
 Outline - shown in a Black outline, County - shown in a pink outline, Tract 2020 - shown in a Black outline, Town - shown in a yellow outline, Water - shown in a blue outline, State - shown in a Black outline



# VERMONT

## Non-MSA Southern VT

FORMAT: STATECODE/COUNTYCODE/TRACTCODE

50/003/9704.01, 50/003/9704.02, 50/003/9705.00, 50/003/9706.01, 50/003/9708.00, 50/003/9709.00, 50/003/9710.00,  
50/003/9711.00, 50/003/9712.00, 50/003/9713.00, 50/003/9714.00, 50/003/9716.00, 50/021/9621.00, 50/021/9622.00,  
50/021/9623.00, 50/021/9624.00, 50/021/9625.00, 50/021/9626.00, 50/021/9627.00, 50/021/9628.00, 50/021/9630.00,  
50/021/9631.00, 50/021/9632.00, 50/021/9633.00, 50/021/9634.00, 50/021/9635.00, 50/021/9636.00, 50/021/9637.00,  
50/021/9638.00, 50/021/9640.00, 50/021/9642.00, 50/021/9643.00, 50/025/9670.00, 50/025/9671.00, 50/025/9672.00,  
50/025/9673.00, 50/025/9674.00, 50/025/9675.00, 50/025/9676.00, 50/025/9677.00, 50/025/9678.00, 50/025/9679.00,  
50/025/9680.00, 50/025/9681.00, 50/025/9682.00, 50/025/9683.00, 50/025/9684.00, 50/025/9685.00, 50/025/9686.00,  
50/025/9687.00, 50/027/9650.00, 50/027/9651.00, 50/027/9654.00, 50/027/9655.01, 50/027/9655.02, 50/027/9656.00,  
50/027/9657.00, 50/027/9658.00, 50/027/9659.01, 50/027/9659.02, 50/027/9660.00, 50/027/9661.00, 50/027/9662.00,  
50/027/9663.00, 50/027/9665.01, 50/027/9665.02, 50/027/9666.00, 50/027/9667.00, 50/027/9668.00